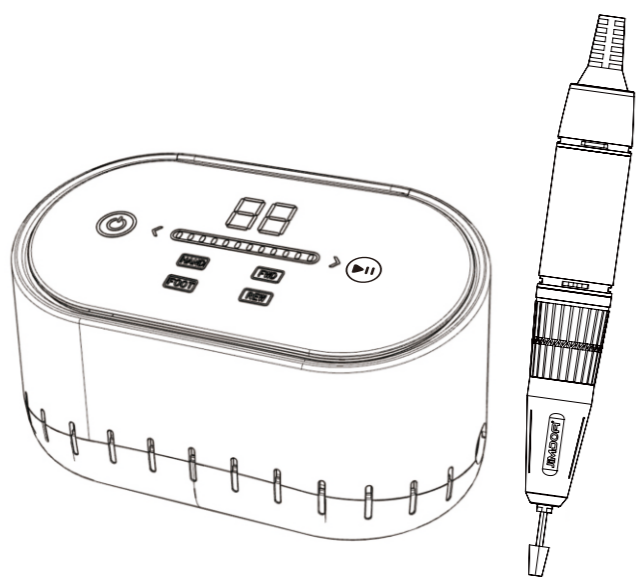


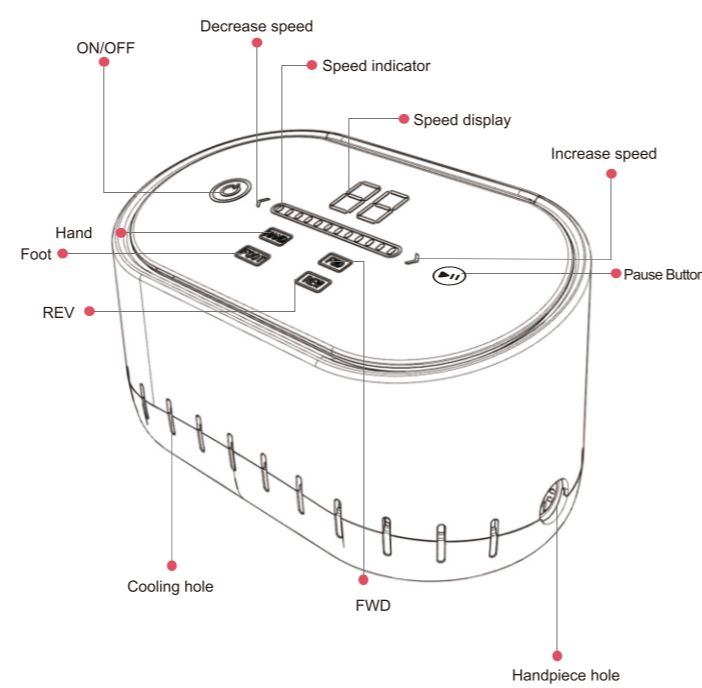
Nail Drill

User Manual



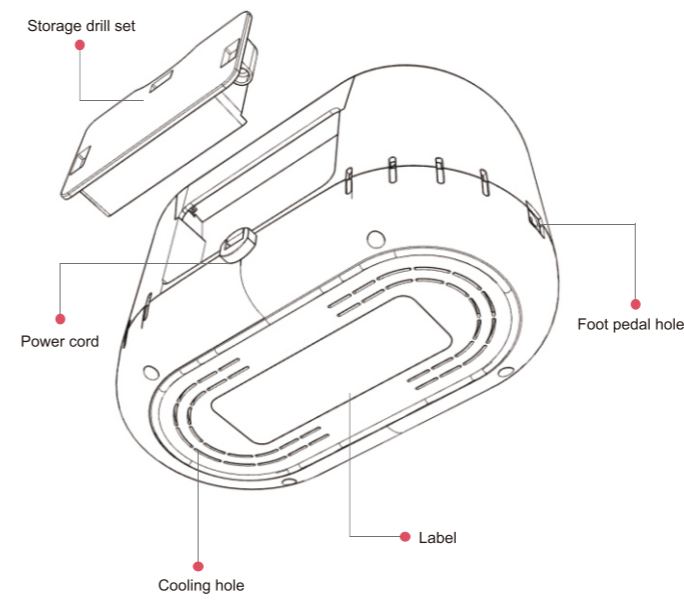
JMD-E217

NAIL DRILL SYSTEM



- 1 -

NAIL DRILL SYSTEM



- 2 -

SPECLFLCATION

Power : 30W
 Input Voltage : AC100-240V 50/60HZ
 Speed : 0-35000rpm
 Output:DC3-15V

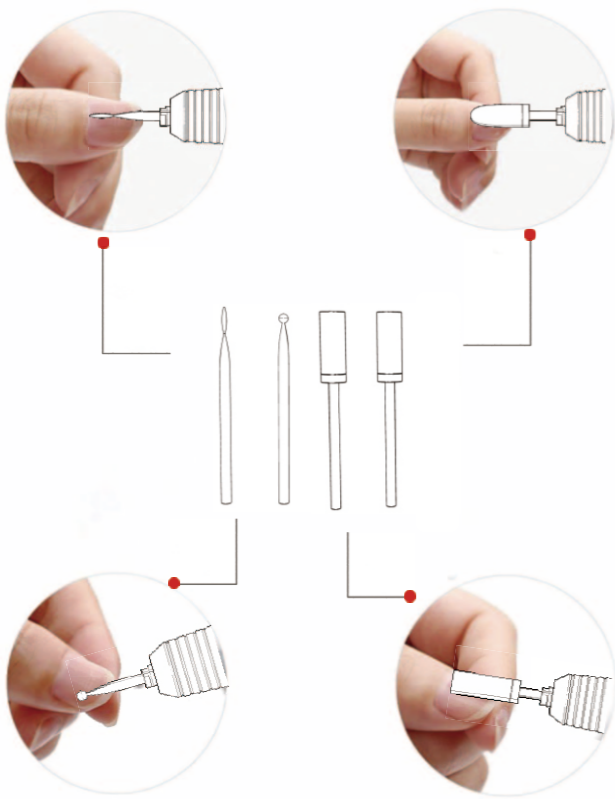
PRECAUTION

1. Do NOT disassemble the handpiece
2. Do NOT drop the handpiece
3. Do not work in a humid environment.
4. Operating Environment Humidity:30-75%
5. Operating Environment Temperature:+10°C~26°C
6. Turn off the power when changing the bits
7. Make sure the power switch is off before plugging in the power cord to avoid an unexpected injury due to sudden start.

- 3 -

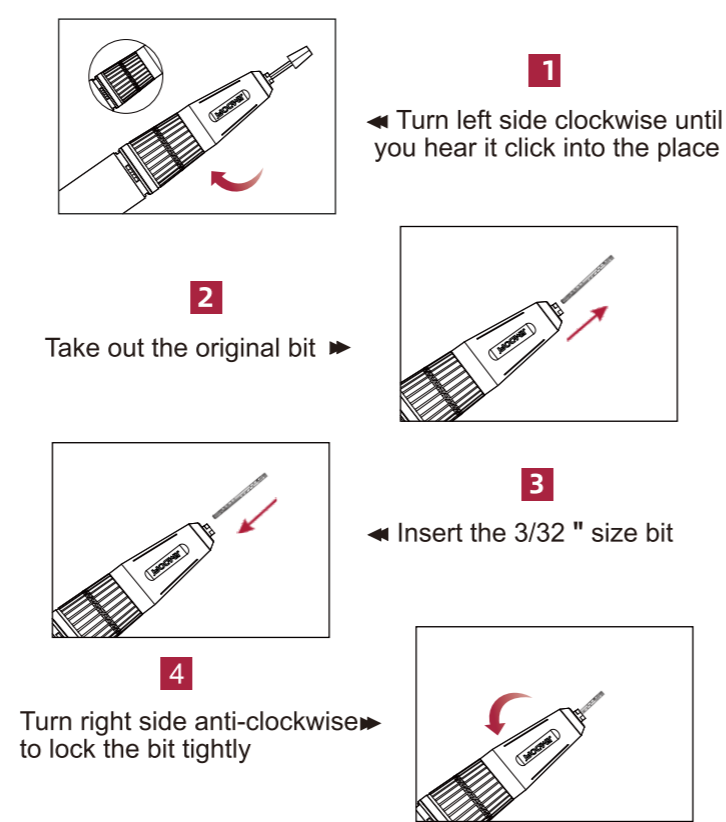
SET AND OPERATION

1. Choose the 3/32 " drill bits



- 4 -

2. Set drill bits



- 5 -

3. Operation Steps:

1. Plug the power cord into the power socket.
2. Plug the handpiece cord into the handpiece jack on the machine.
3. Press " > " key, it is the upshift key 0-35(RPM*1000), Long press can continuously jump to 35(RPM*1000), Or adjust to the desired setting gear.
4. Press " < " key, it is the downshift key 35-0 (RPM*1000), Long press can continuously jump to 0(RPM*1000), Or adjust to the desired setting gear.
5. Press the " ⏸ " switch for 2 seconds to make the machine goes into the pause state, press 2 seconds again, the machine will goes back to work.
6. Press the " FWD/REV " switch to adjust the Forward and Reverse rotation.
7. Press the key of " HAND/FOOT ", the machine can be changed by hands and foot model.
8. Do not use the machine for 3 minutes, the machine will keep standby state.

- 6 -